



# PLANTATION MERCHANDISE MART

**Property for Lease**

# Plantation Merchandise Mart

*4301-4379 West Sunrise Boulevard, Plantation, FL 33313*



## Property Details

- Property Size: **35,960 SQ FT**
- Excellent visibility on Sunrise Boulevard
- Close to multiple school systems, Central Broward Regional Park, Plantation General Hospital, and the Florida Medical Center
- Less than 1 mile from Florida's Turnpike and 2 ½ miles to I-95
- High traffic count
- Conveniently located between 441 and Florida's Turnpike on Sunrise Boulevard
- Locally owned and managed
- Great mix of retail and neighborhood tenants

# PLANTATION MERCHANDISE MART

4301-4379 West Sunrise Blvd., Plantation, FL 33313



## Property Details

NO.	RETAILER NAME	SQ FT
4301	New Hope Medical Group	1,181
<b>4307</b>	<b>AVAILABLE</b>	<b>1,250</b>
4313	TM Manufacturing	1,250
4319	Hair Renaissance	1,227
4325	All Broward Realty	2,498
4337	Super School, Inc.	7,100
4349	Bridal Boutique	3,400
4355	Meals on Wheels South Florida	2,521
4361	A-1 American Plumbing Plantation	5,256
4373	Open MRI	6,569
4379	All Uniform Wear	3,708

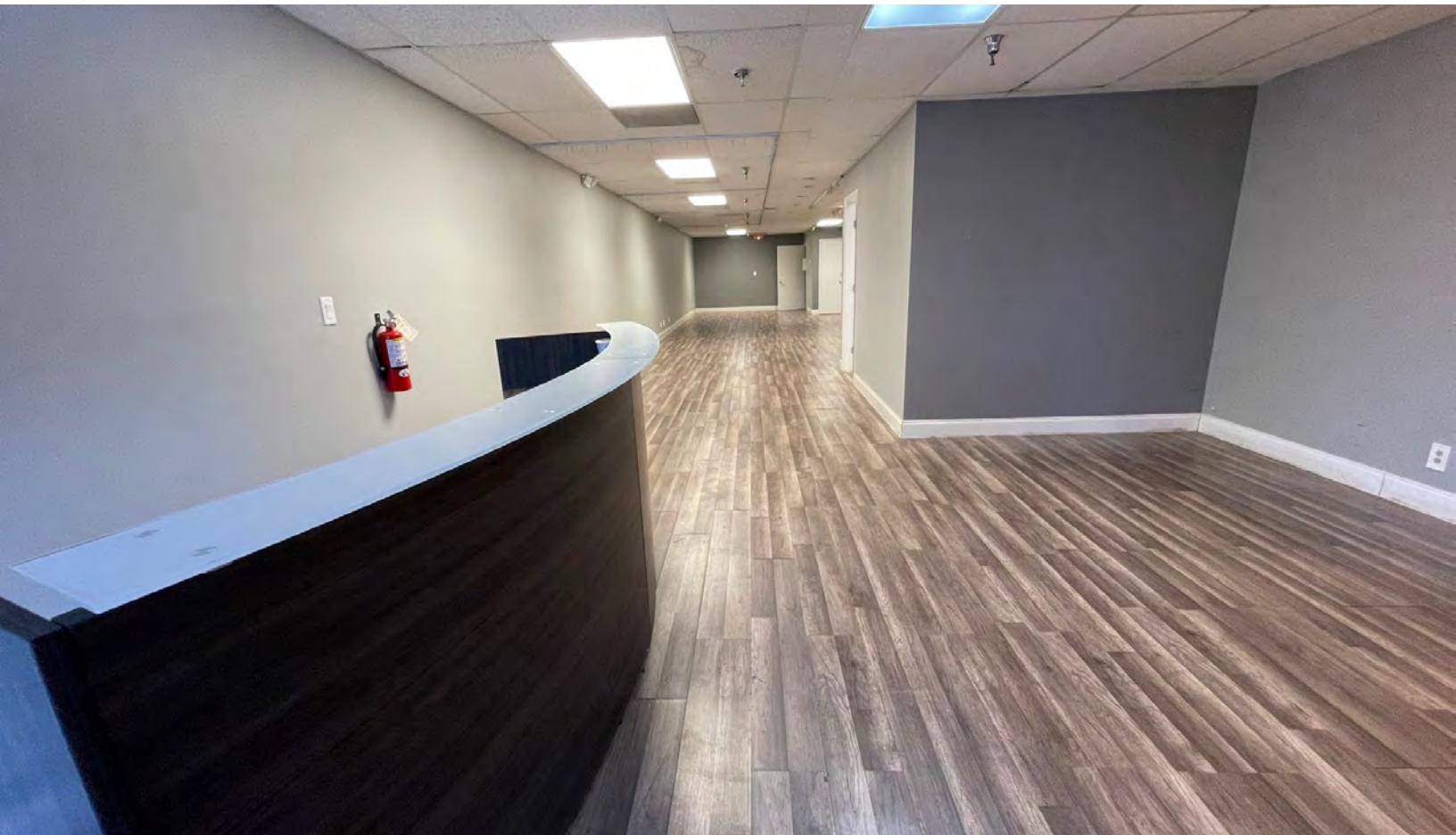
## Demographics

	1 mi.	3 mi.	5 mi.
Population Avg.	23,096	198,567	478,800
HH Income	\$77,935	\$88,818	\$108,740
Households	8,580	71,545	195,410



# PLANTATION MERCHANDISE MART

Suite 4313 – 1,250 SQ Ft



200 LAKE AVENUE, 2ND FLOOR  
LAKE WORTH BEACH, FL 33460

561-533-0344  
LEASING@IN-REL.COM

@IN-REL PROPERTIES  
@INREL.PROPERTIES



# FLOOR PLAN

Suite 4313 – 1,250 SQ FT

