

INSPIRED WORKDAYS
HAPPEN HERE

75
00
OGR



CLASS-A BUILDING
ANCHORED AT THE EPICENTER OF BETHESDA
ON WISCONSIN AVE AND OLD GEORGETOWN RD



STEP INSIDE GREATNESS

75
00
OGR

Step into the bright lobby of 7500 OGR, where natural light floods through floor-to-ceiling windows, setting the stage for a productive day ahead. Recently renovated, the space is fresh and inviting, featuring cozy nooks for collaboration and a striking reception desk at its heart.

For those seeking breakout space, head down to the lower level, where you'll find the tenant lounge—a hub for teamwork and focus. Others seeking to energize their day can utilize the fully equipped fitness center catering to all needs.

But when it's time to host events, make your way up to the 16th floor, where the conference center awaits. With 3,500 square feet of space, it offers flexible rooms for gatherings of any size, including an auditorium seating 100 people, equipped with state-of-the-art A/V technology to ensure seamless presentations and engaging discussions.

ADJACENT TO THE AUDITORIUM, A PRE-FUNCTION LOUNGE AWAITS, READY TO WELCOME GUESTS TO LARGER EVENTS AND CORPORATE ENGAGEMENTS. IN ESSENCE, 7500 OGR ISN'T JUST AN OFFICE—IT'S A CAREFULLY CURATED SPACE DESIGNED TO ENHANCE EVERY ASPECT OF THE WORKDAY, FROM COLLABORATION TO PRESENTATIONS.

INVITING CONNECTIONS



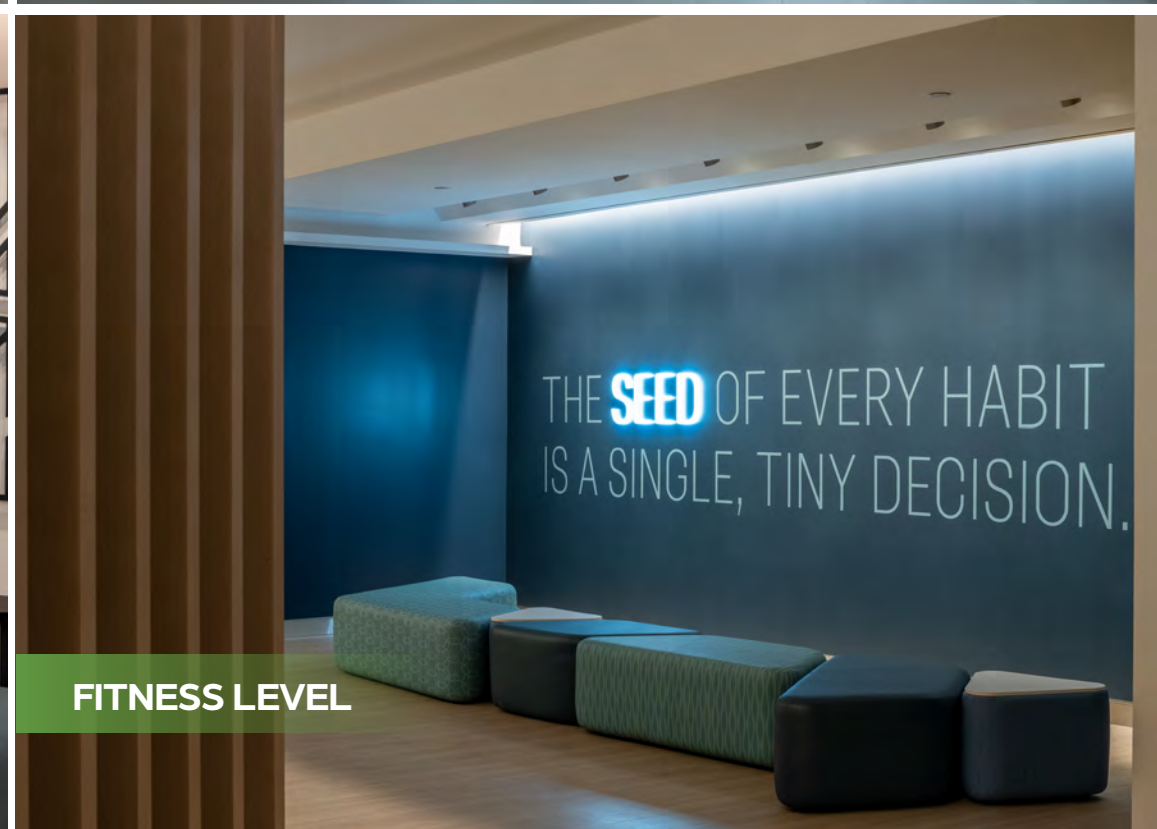
EXTERIOR PLAZA



FITNESS CENTER



LOWER LEVEL LOUNGE

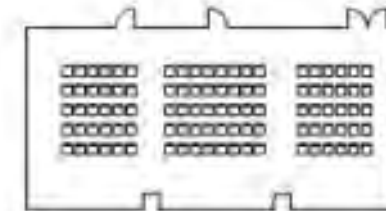


FITNESS LEVEL

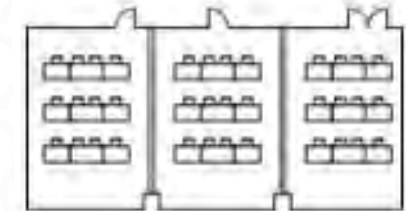
ONE CONFERENCE CENTER COUNTLESS POSSIBILITIES

75 POSSIBLE CONFIGURATIONS

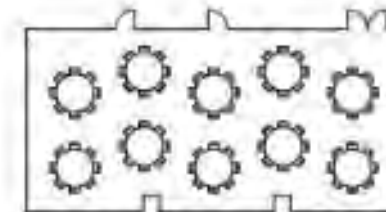
Here are eight of the most popular arrangements using the full room and partition variations:



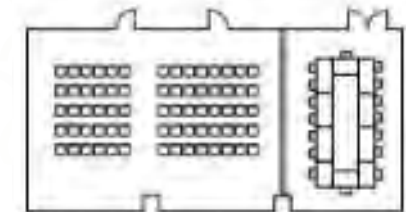
100 PERSON LECTURE



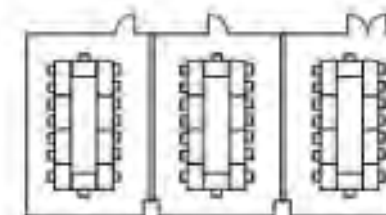
(3) TRAINING ROOMS



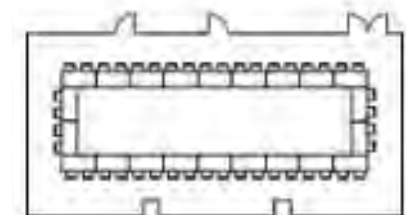
LARGE EVENT



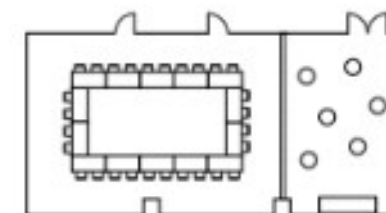
2:1 LECTURE & BOARD ROOM



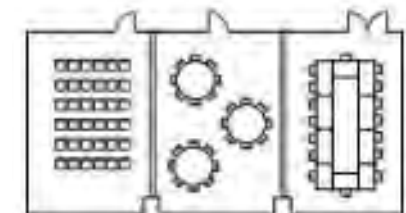
(3) COLLABORATION ROOMS



2:1 LECTURE & BOARD ROOM

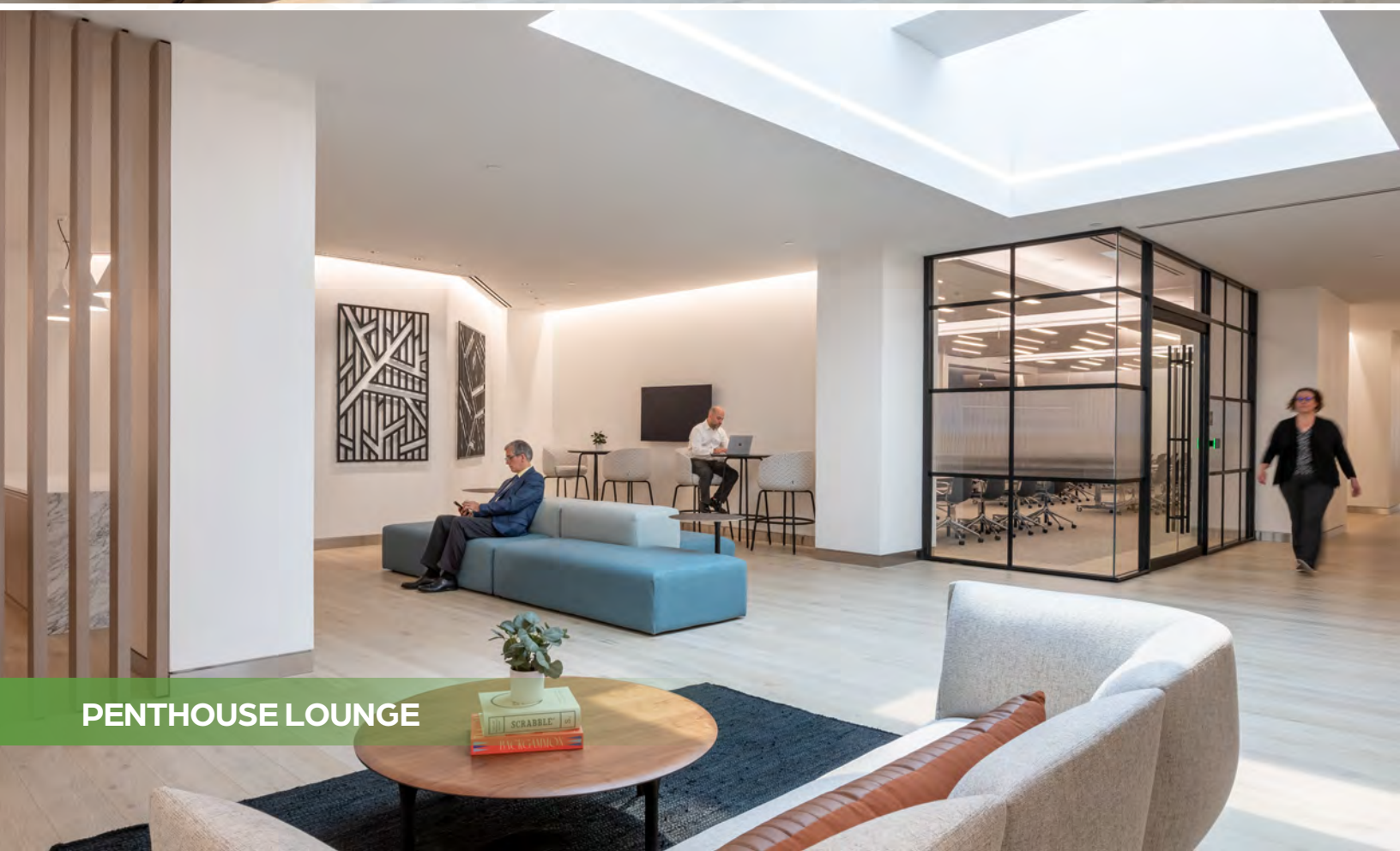


2:1 BOARD ROOM & HAPPY HOUR



(3) LECTURE, EVENT, BOARD ROOM

3,500 SF of Possibilities, fully-equipped with state-of-the-art technology system including A/V, Wi-Fi, and speak system.

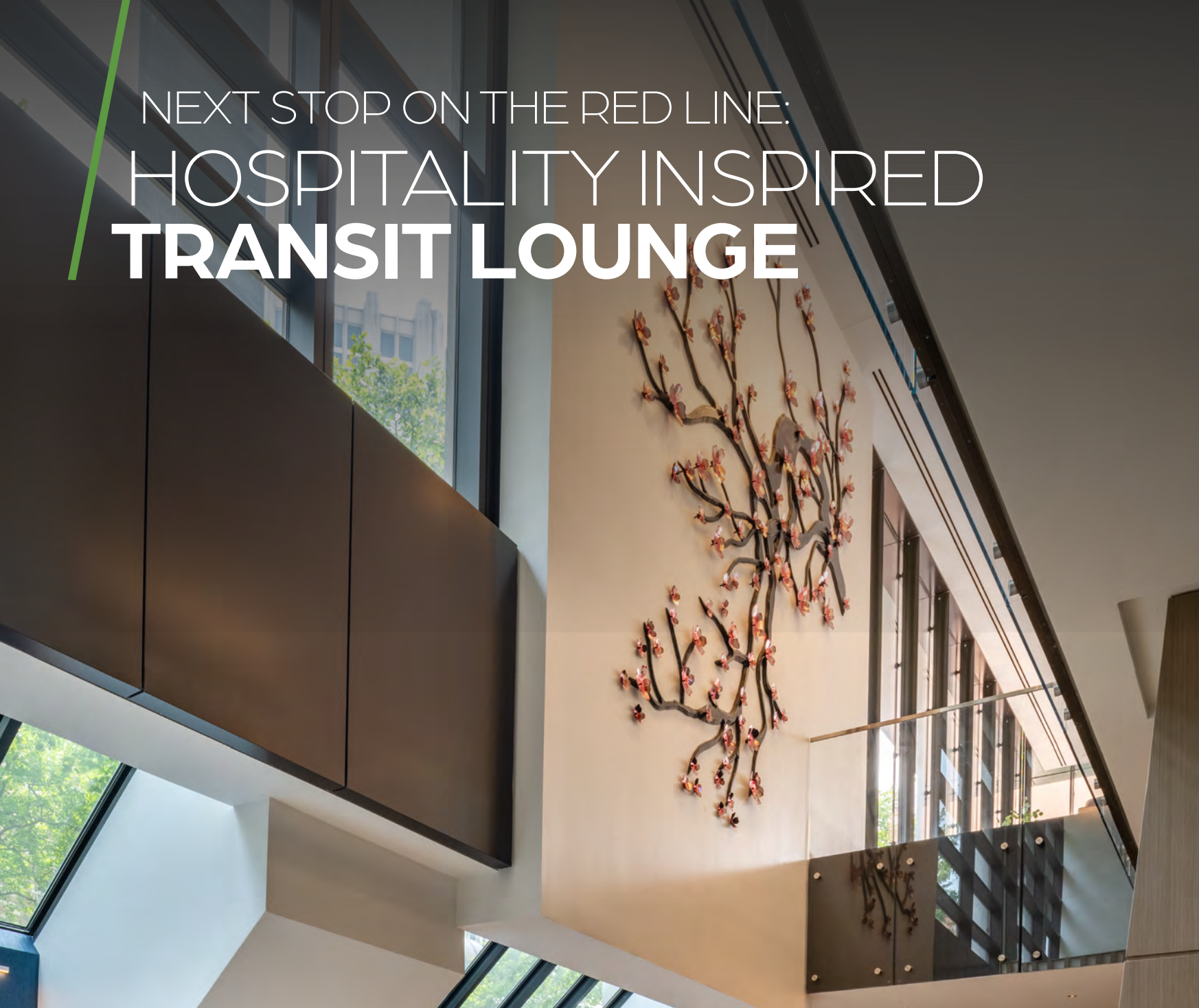


PENTHOUSE LOUNGE



LOWER LEVEL LOUNGE

NEXT STOP ON THE RED LINE: HOSPITALITY INSPIRED TRANSIT LOUNGE



ACCESS TO **BETHESDA** **METRO STATION**

Experience unparalleled convenience at the new lower-level tenant lounge, directly accessible from the Bethesda Metro Station. This modern space boasts a captivating 20-foot-high art installation and a dynamic mix of seating, perfect for collaboration and connectivity. With a TransitScreen, commuters can easily access real-time updates on Metro rail and bus timings, as well as nearby options for Ubers, bikes, e-bikes, and scooters, all displayed on the lounge's digital wall.

FITNESS WITH FLEX APPEAL

7500 OGR NEW FITNESS CENTER SHOWCASES:



YOGA STUDIO



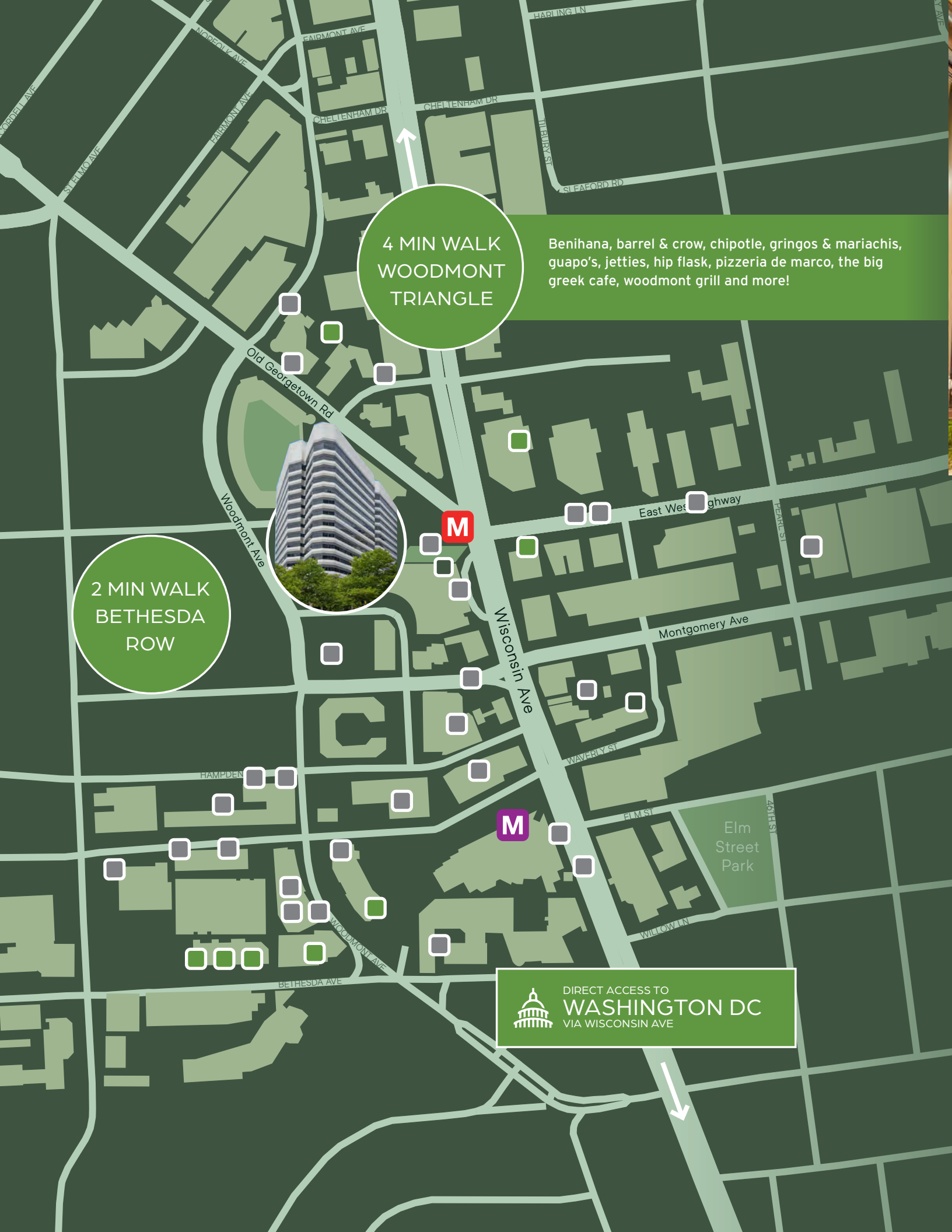
5,200 SQUARE FEET OF TOP-TIER EQUIPMENT



DELUXE LOCKER ROOM FACILITIES



INDIVIDUAL WORKOUT STATIONS
FEATURING ECHELON FITNESS REFLECT
SMART MIRRORS



4 MIN WALK
WOODMONT
TRIANGLE

Benihana, barrel & crow, chipotle, gringos & mariachis, guapo's, jetties, hip flask, pizzeria de marco, the big greek cafe, woodmont grill and more!

2 MIN WALK
BETHESDA
ROW

DIRECT ACCESS TO
WASHINGTON DC
VIA WISCONSIN AVE

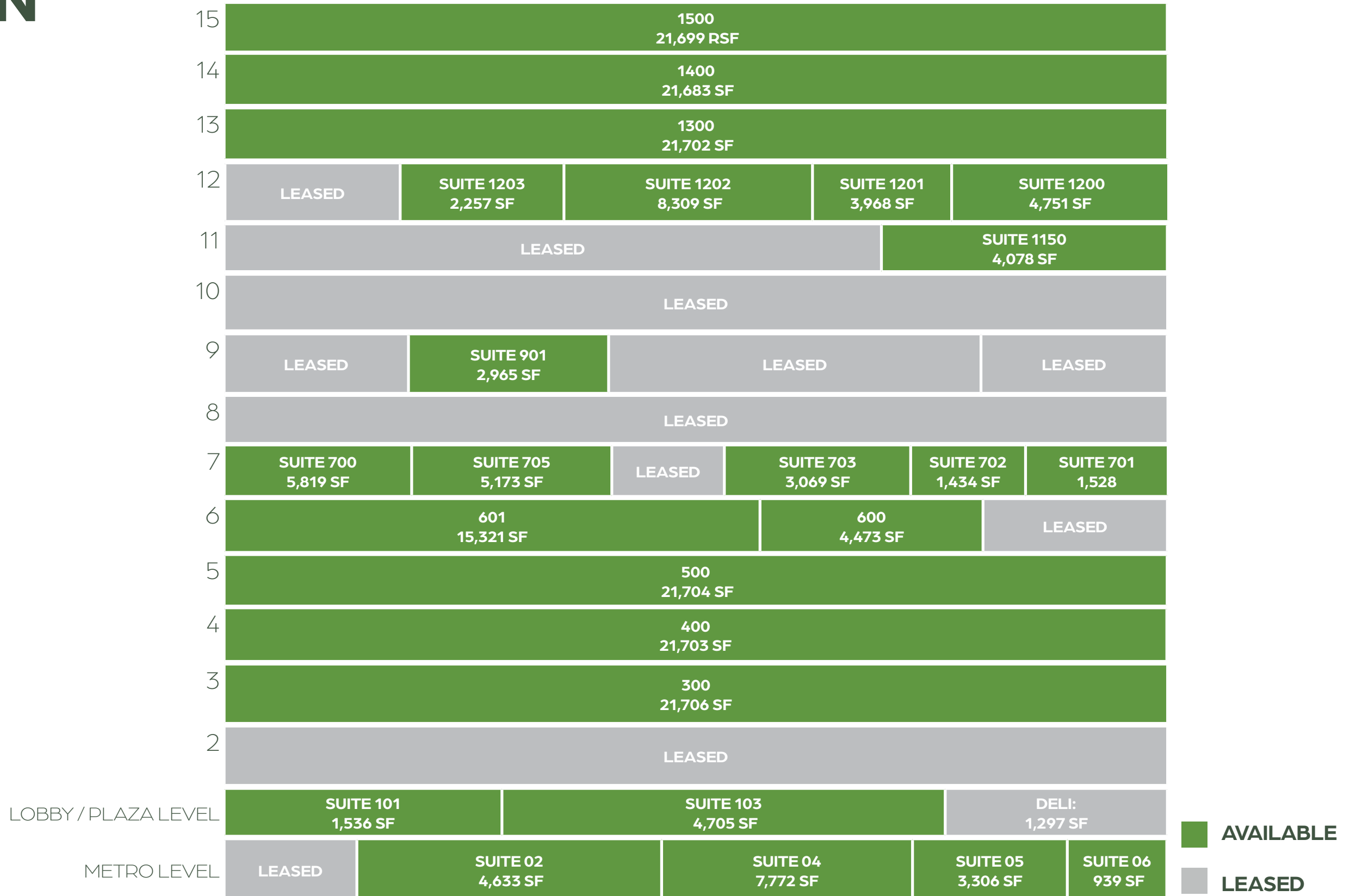


BETHESDA ROW RETAIL

Includes Giant, sweetgreen, lululemon, Raku, Sassanova, Morley, Mon Ami Gabi, Kapnos Kouzina, The Apple Store, Aveda, Drybar, Equinox, Bluemercury, Warby Parker, Jaleo, Landmark Theatre, Uncle Julio's, Williams-Sonoma, Urban Country, and Anthropologie & Co., among many others, as well as office and a residential community, Upstairs at Bethesda Row.

RETAIL HOTELS DINING METRO STOPS

STACKING PLAN



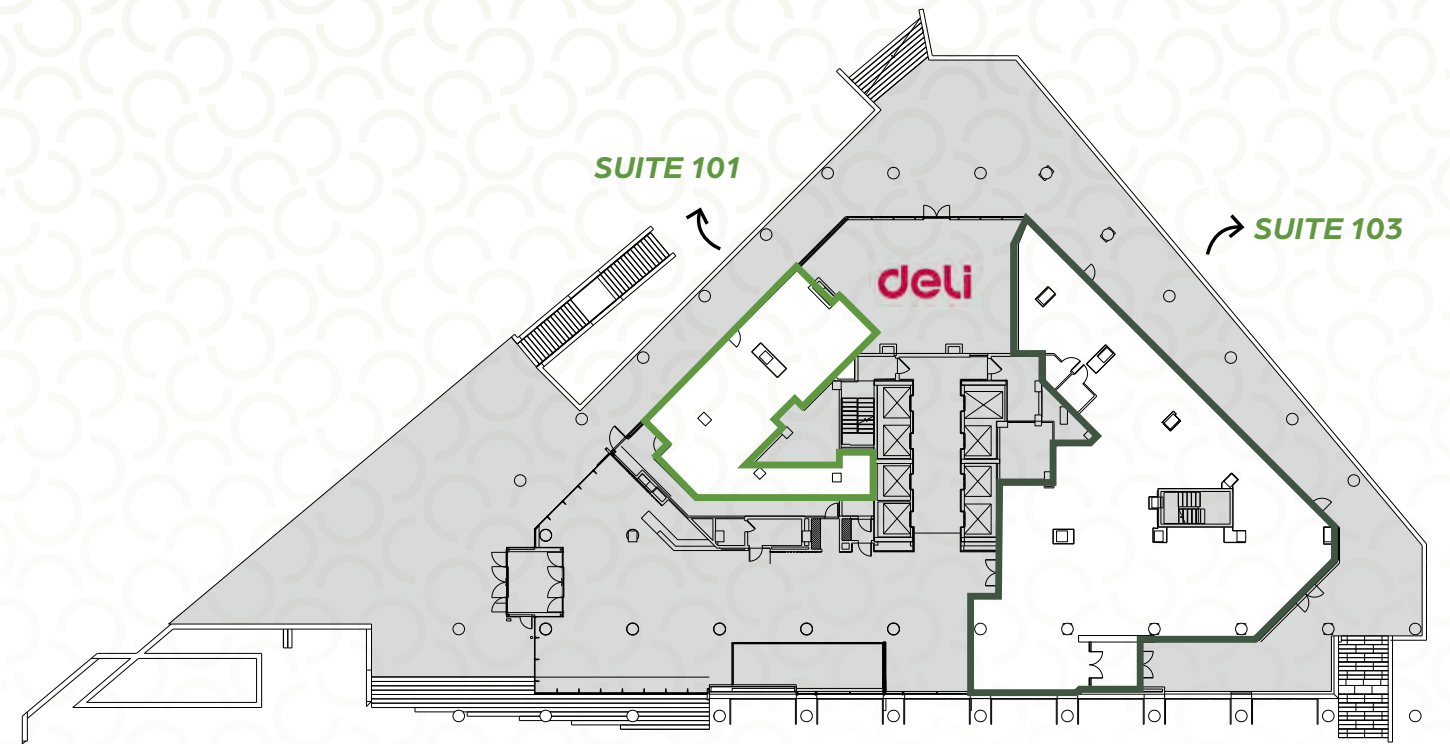
METRO LEVEL

- Suite 02: 4,633 SF
- Suite 04: 7,772 SF
- Suite 05: 3,306 SF
- Suite 06: 939 SF



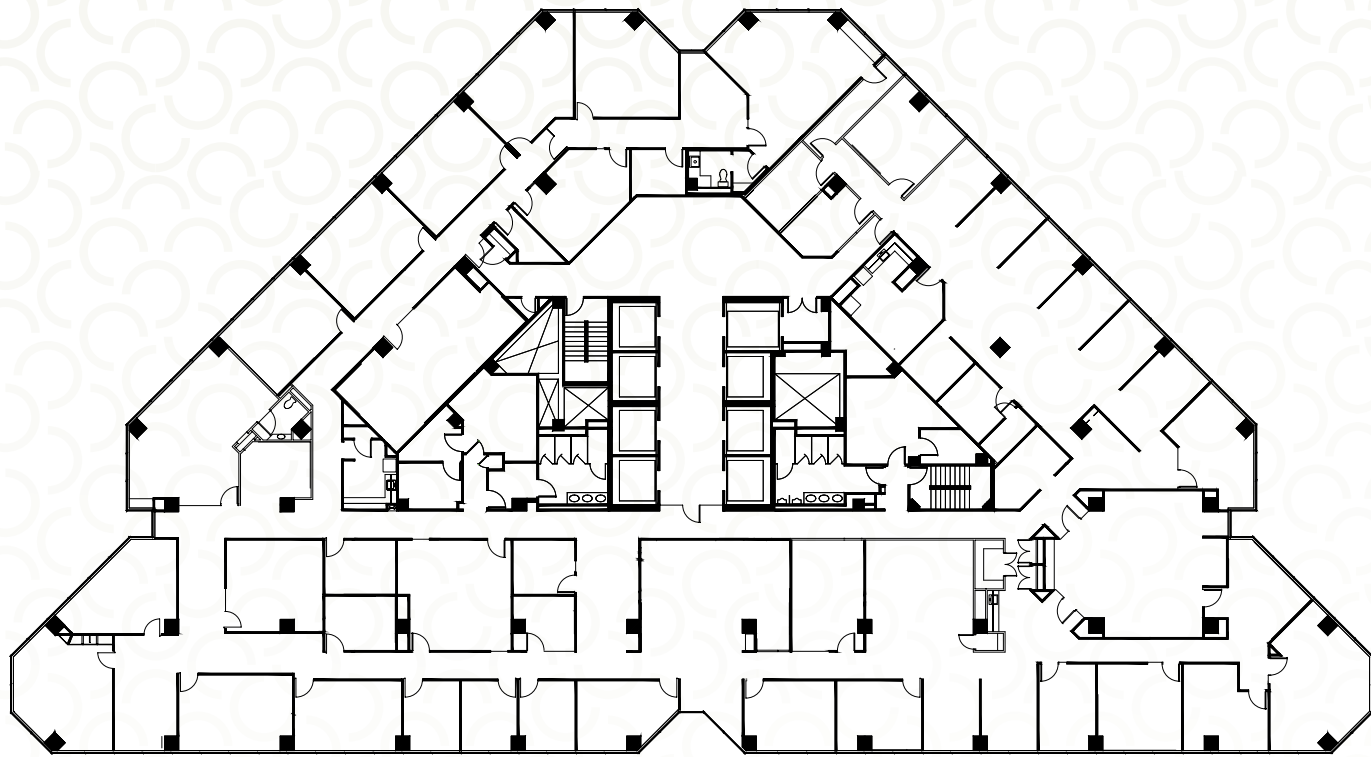
LOBBY / PLAZA LEVEL

- Suite 101: 1,536 SF
- Suite 103: 4,705 SF
- Deli: 1,297 SF



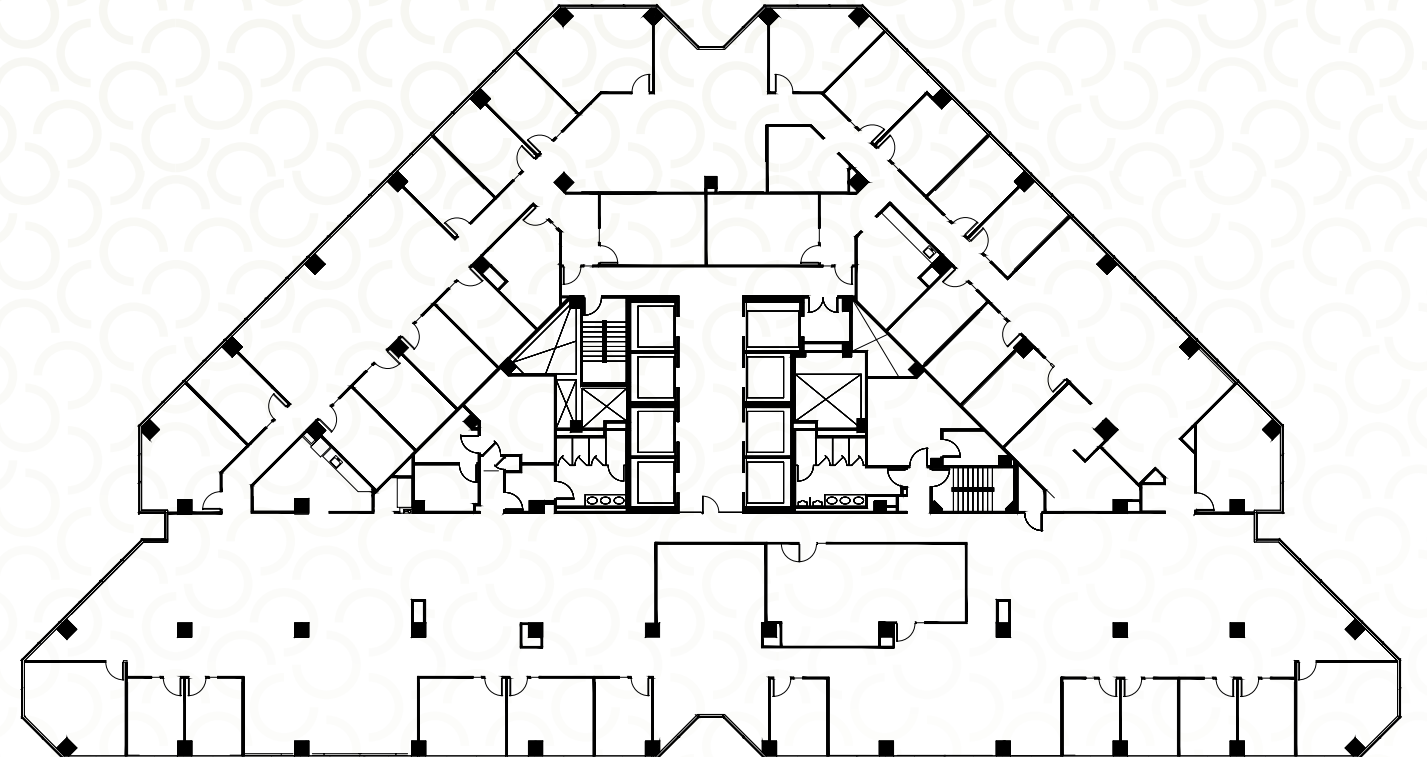
3RD FLOOR

Suite 300: 21,706 SF



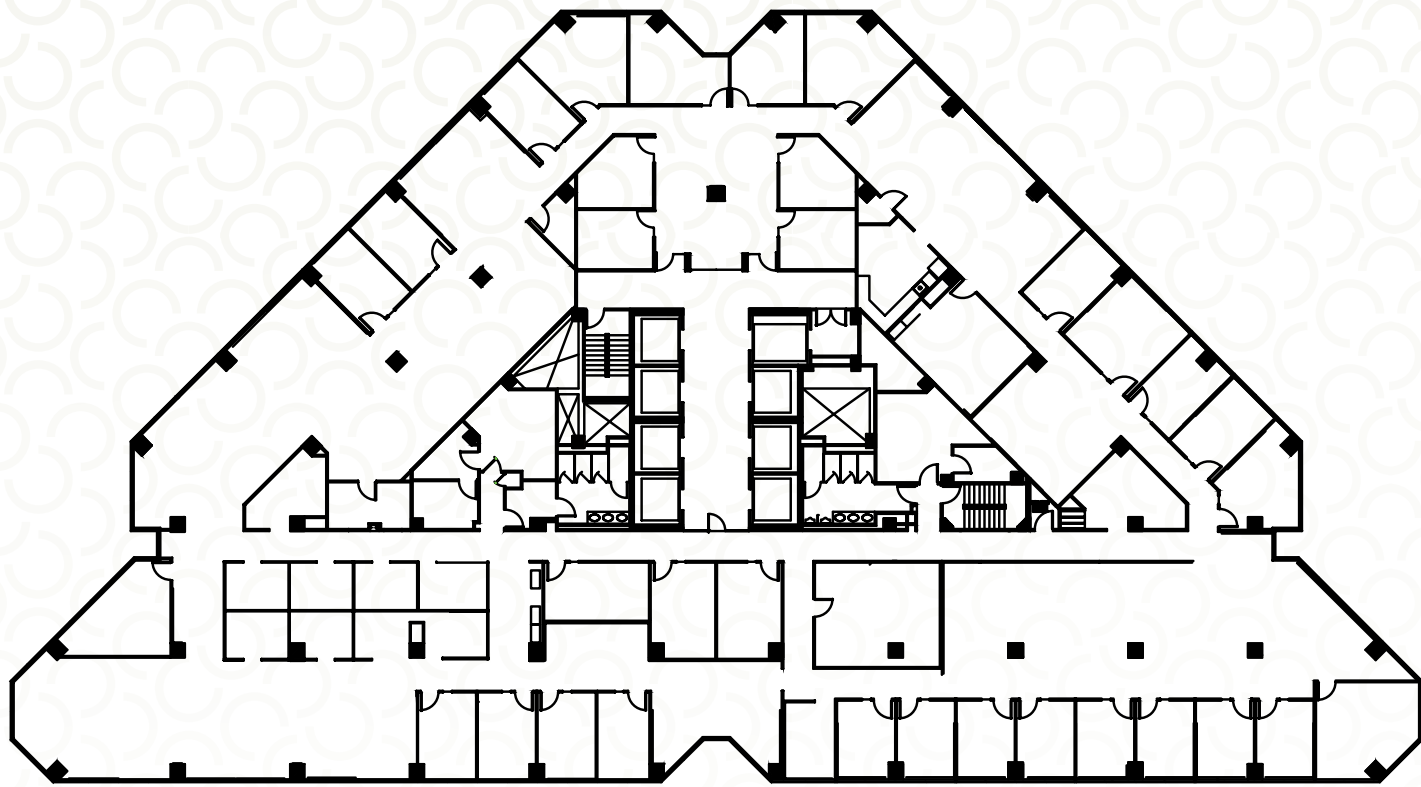
4TH FLOOR

Suite 400: 21,703 SF



5TH FLOOR

Suite 500: 21,704 SF



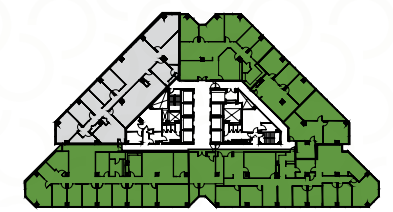
6TH FLOOR

Suite 601: 15,321 SF
Suite 600: 4,473 SF } 19,794 SF



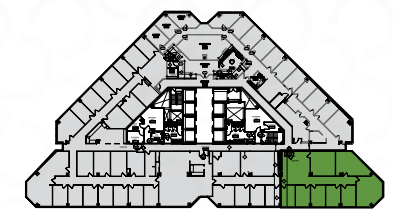
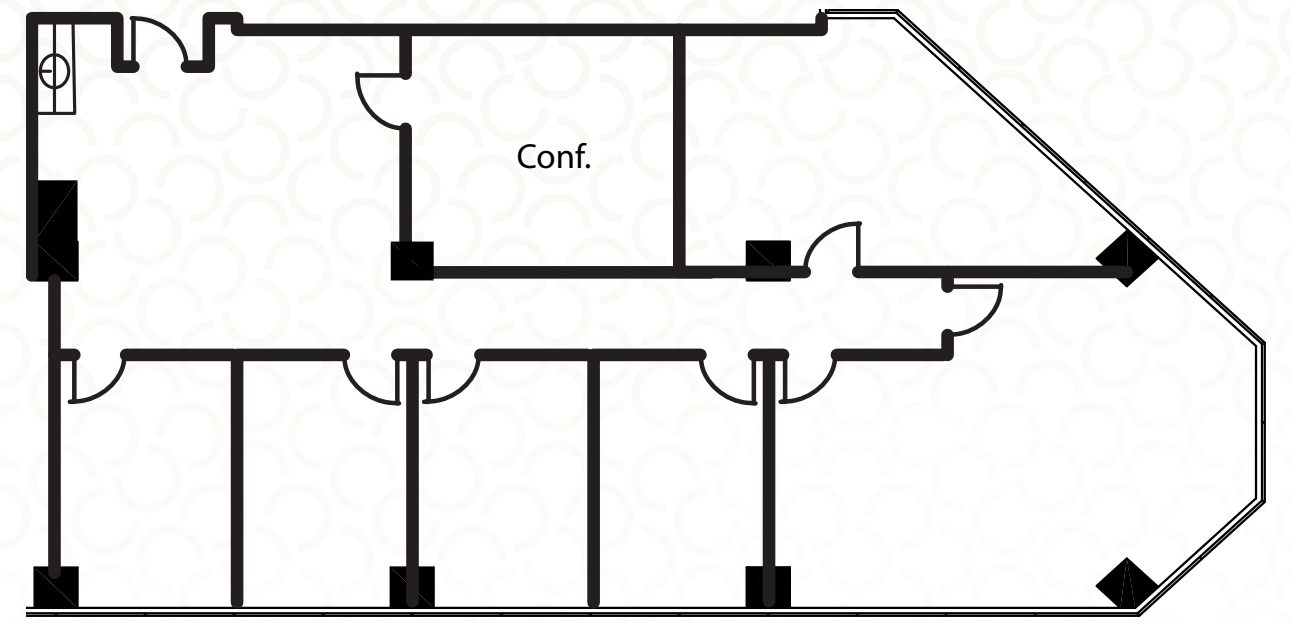
7TH FLOOR

- Suite 700: 5,819 SF
- Suite 701: 1,528 SF
- Suite 702: 1,434 SF
- Suite 703: 3,069 SF
- Suite 705: 5,173 SF



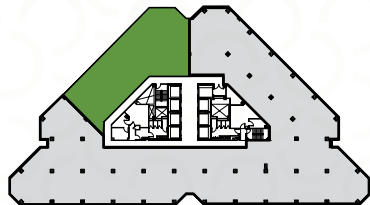
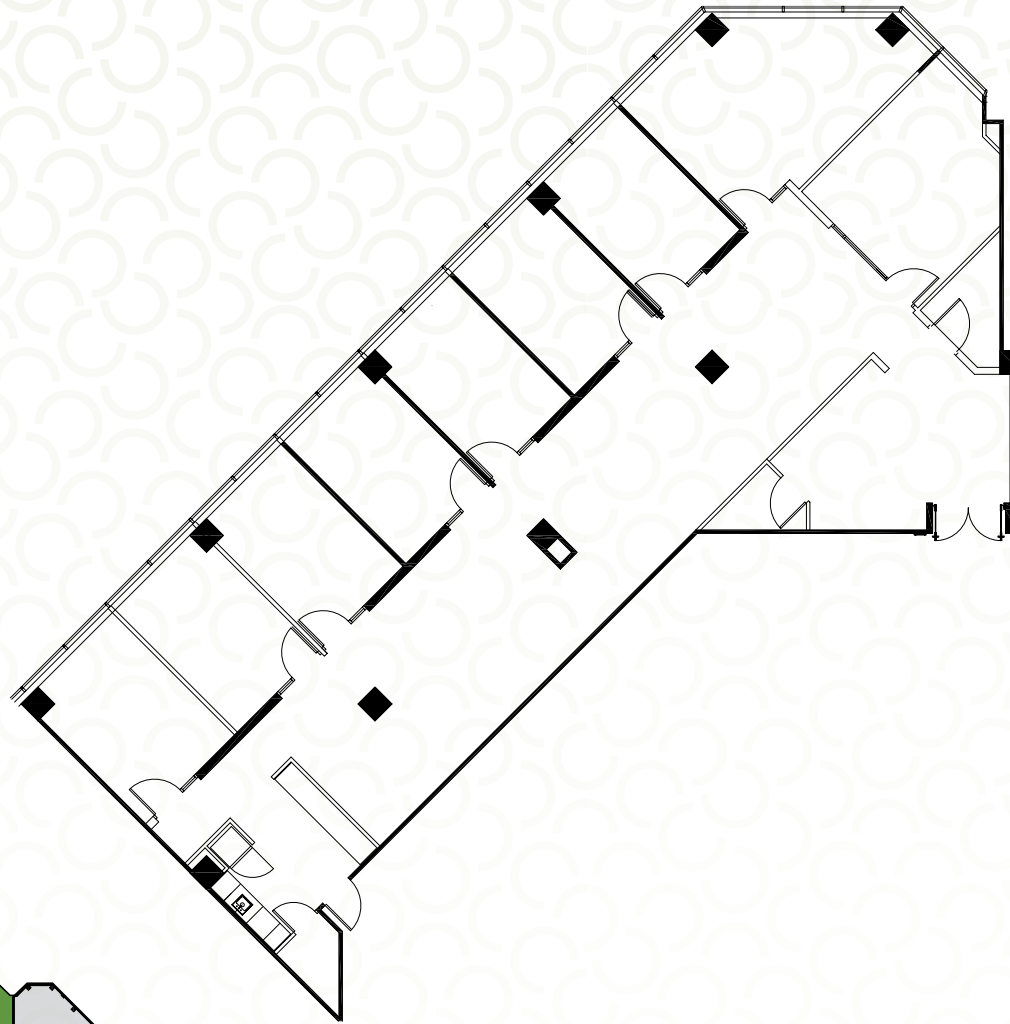
9TH FLOOR

- Suite 901: 2,965 SF



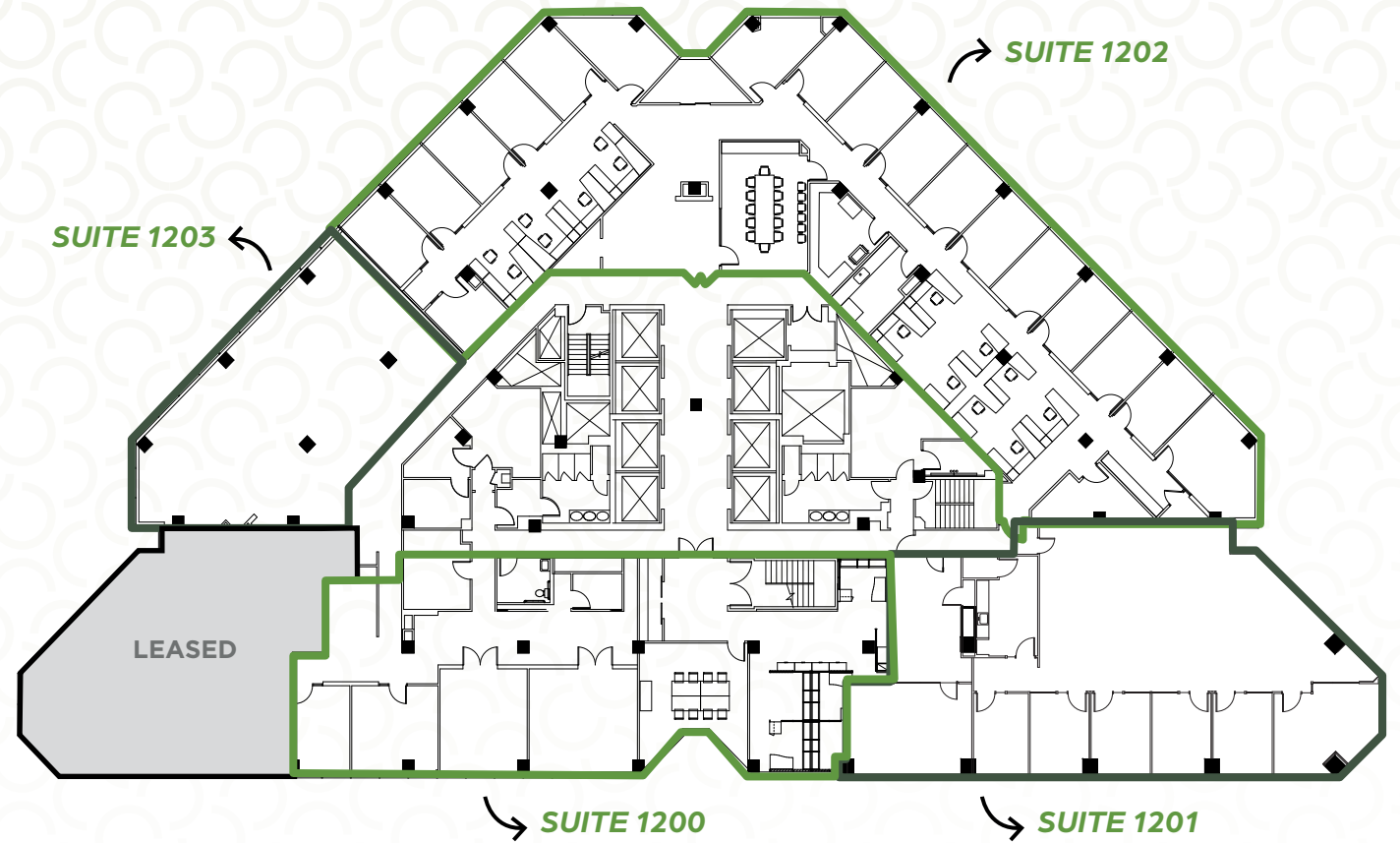
11TH FLOOR

Suite 1150: 4,078 SF



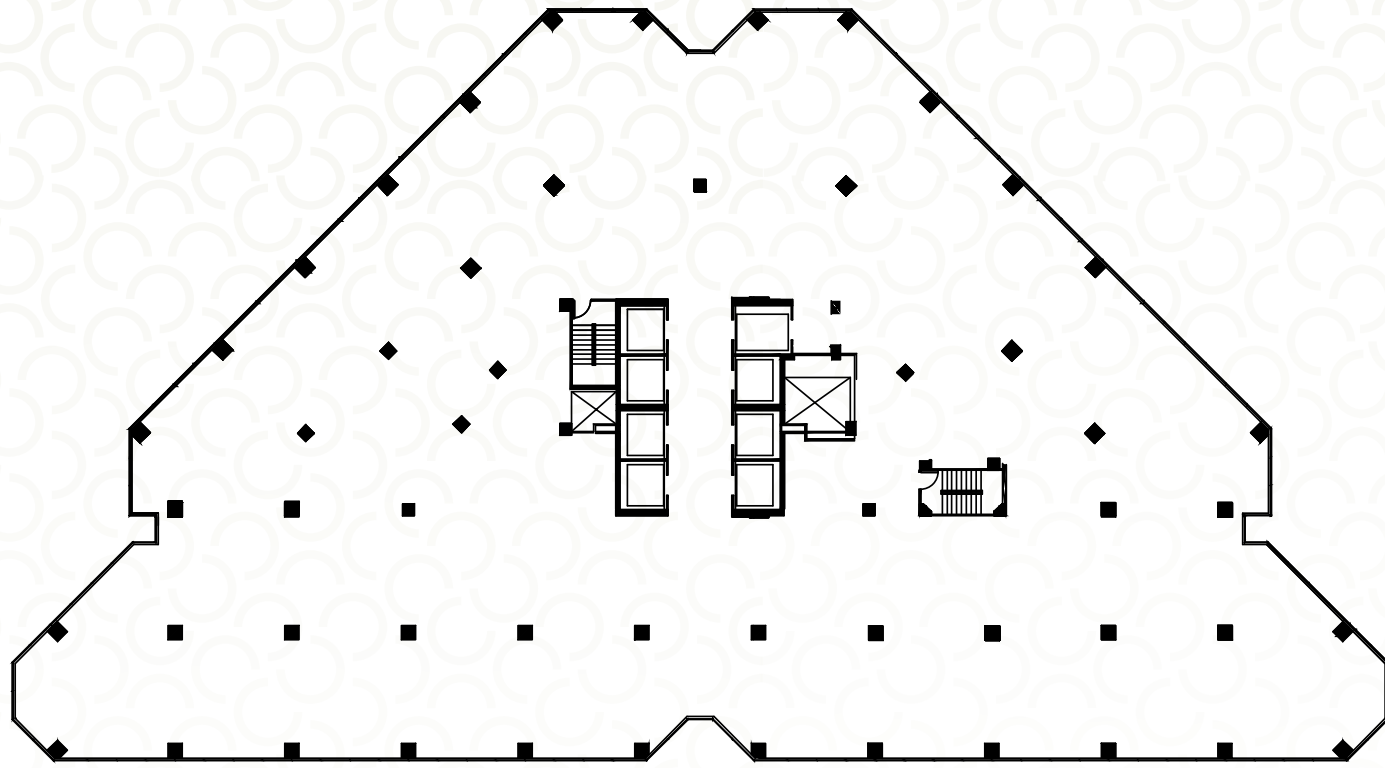
12TH FLOOR

- Suite 1200: 4,751 SF
- Suite 1201: 3,968 SF
- Suite 1202: 8,309 SF
- Suite 1203: 2,257 SF



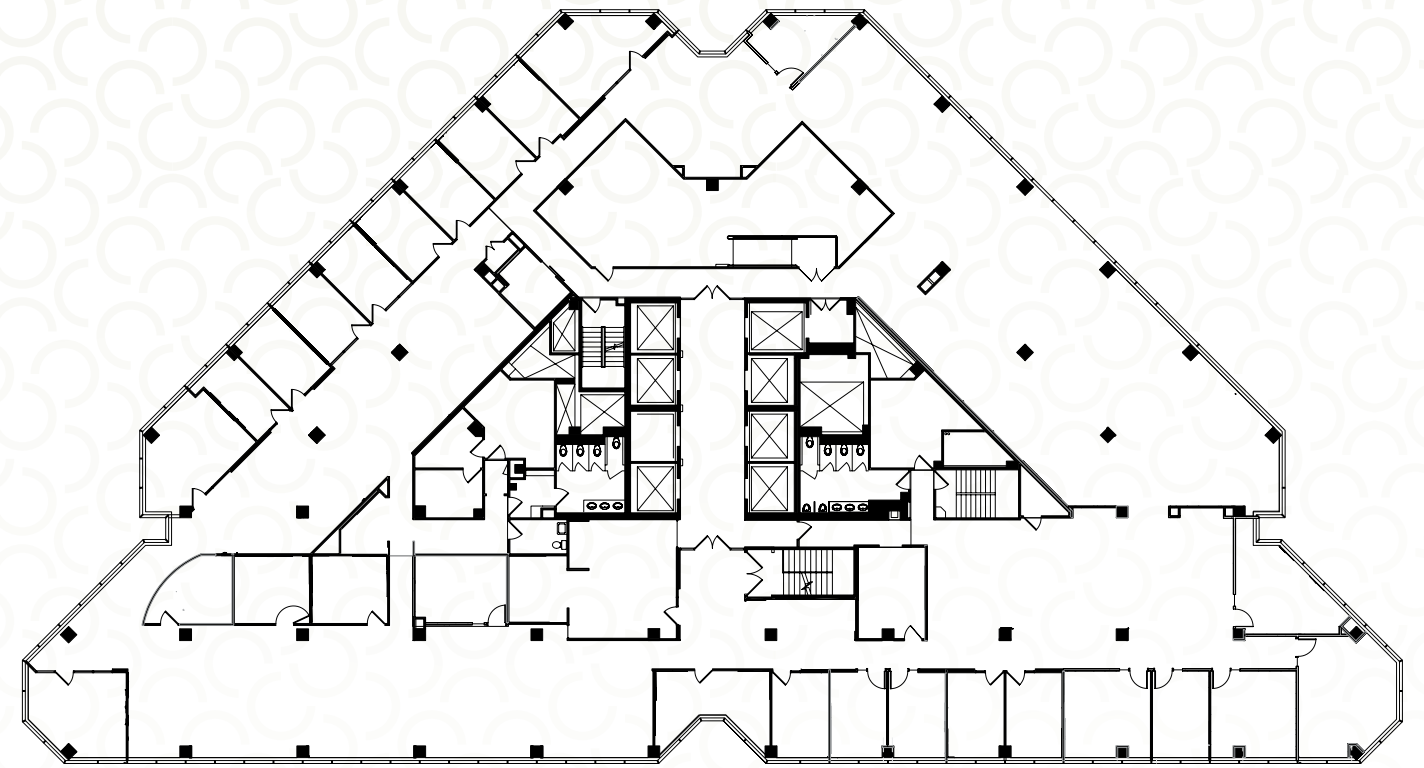
13TH FLOOR

Suite 1300: 21,702 SF



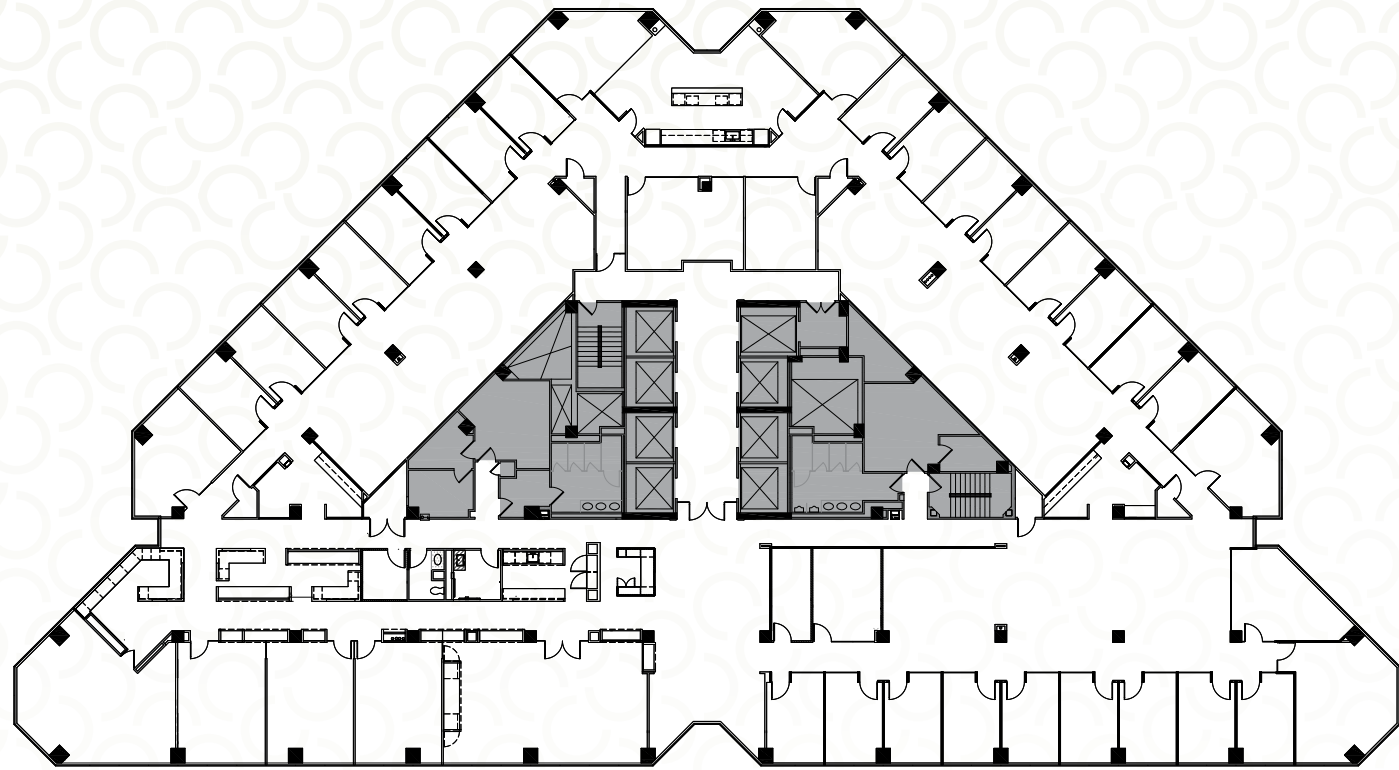
14TH FLOOR

Suite 1400 : 21,683 SF



15TH FLOOR

Suite 1500: 21,699 SF



75
00

OGR

INSPIRED WORKDAYS HAPPEN HERE

GWEN DOMINGUEZ
gwen.fraker@cushwake.com

BEN POWELL
ben.powell@cushwake.com

©2024 Cushman & Wakefield. All rights reserved. The information contained in this communication is strictly confidential. This information has been obtained from sources believed to be reliable but has not been verified. NO WARRANTY OR REPRESENTATION, EXPRESS OR IMPLIED, IS MADE AS TO THE CONDITION OF THE PROPERTY (OR PROPERTIES) REFERENCED HEREIN OR AS TO THE ACCURACY OR COMPLETENESS OF THE INFORMATION CONTAINED HEREIN, AND SAME IS SUBMITTED SUBJECT TO ERRORS, OMISSIONS, CHANGE OF PRICE, RENTAL OR OTHER CONDITIONS, WITHDRAWAL WITHOUT NOTICE, AND TO ANY SPECIAL LISTING CONDITIONS IMPOSED BY THE PROPERTY OWNER(S). ANY PROJECTIONS, OPINIONS OR ESTIMATES ARE SUBJECT TO UNCERTAINTY AND DO NOT SIGNIFY CURRENT OR FUTURE PROPERTY PERFORMANCE.

